

escalators & moving walks



Your 1st Choice in Lifts



Escalators & Moving Walks

KLEEMANN, Your 1st Choice In Lifts, is also a pioneer company in the market of escalators and moving walks, offering high quality products and services.

Solutions of efficient function and high reliability for any space that requires escalators or moving walks, offering the **KLEEMANN** guarantee and meeting all needs, however specific.

Features / Advantages

- Their functional design combined with the multiple choices of dimensions and equipment, offer an exceptional attractive image that best suits the surrounding environment
- Completely suitable for application at airports, metros, malls, hotels, offices, etc
- Comply with all safety requirements and offer high operational performance
- Durability and long operational life
- Noiseless operation and transport quality
- CE marking and complete certifications, according to EN 115 standards
- Easy, fast installation and maintenance
- Reliable solution with the **KLEEMANN** guarantee



Escalators

TYPE	FES	FEH
Suggestive usage/operation	12-16 hours daily	20-24 hours daily
Transportation ability *	up to 11700 passengers / hour	
Inclination	30° / 35°	
Pallet width [mm]	600 / 800 / 1000	
Balustrade design	Vertical safety glass (10 mm safety tempered glass). Height 1000 mm	Vertical safety glass (10 mm safety tempered glass) /Inclined satine 2mm. Height 1000 mm
Speed [m/sec]	0,5	0,5-0,65
Vertical distance [m]	2-7,5	3-25
Power supply	AC 3 phase 50-60Hz	
Installation	Indoor/Semi indoor**/Outdoor	

Moving Walks

TYPE	FET	FEF	FEW
Suggestive usage/operation	12-16 hours daily	20-24 hours daily	
Transportation ability *	up to 9000 passengers / hour		up to 13500 passengers / hour
Inclination	10° / 11° / 12°		0°-6°
Pallet width [mm]	800 / 1000		1000 / 1200 / 1400
Balustrade design	Vertical safety glass (10 mm safety tempered glass). Height 1000 mm		
Speed [m/sec]	0,5		
Vertical distance [m]	2-8		-
Max Installation Length [m]	-		120
Power supply	AC 3 phase 50-60Hz		
Installation	Indoor		Indoor/Semi indoor**/Outdoor

* Theoretical value based on calculations

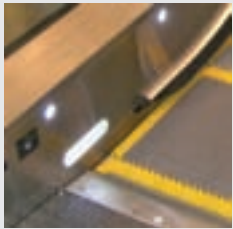
** Direct contact of rain and snow is not allowed for this Installation

Escalators & Moving Walks



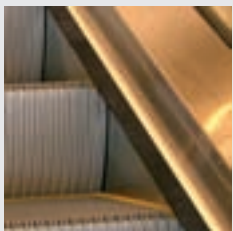
Skirting Add-ons

With optional tube or led lightning and/or brush



Comb

Optional led lighting



Skirting

Choose between stainless steel and black teflon



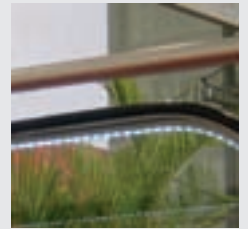
Handrails

Wide choice of handrail colors



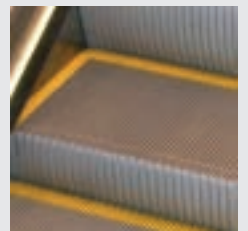
Claddings & Profiles

Choose between various materials and finishes, including stainless steel, brass or aluminum (glass).



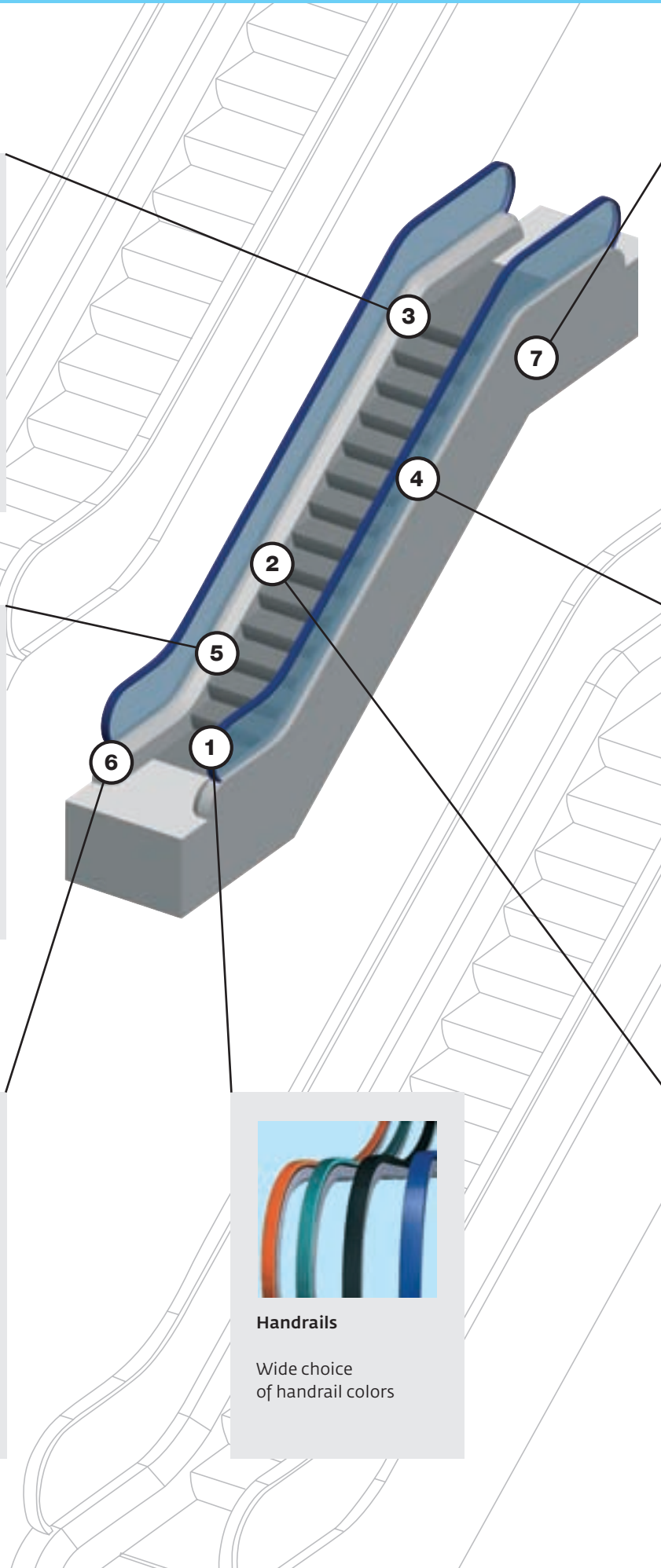
Balustrade

Choose between hairline stainless steel (FEH) and tempered safety glass. With optional lighting (LED or TUBE type).



Steps/Pallets

With optional color and safety demarcation



KLEEMANN SOLUTIONS

COMPLETE LIFT SYSTEMS

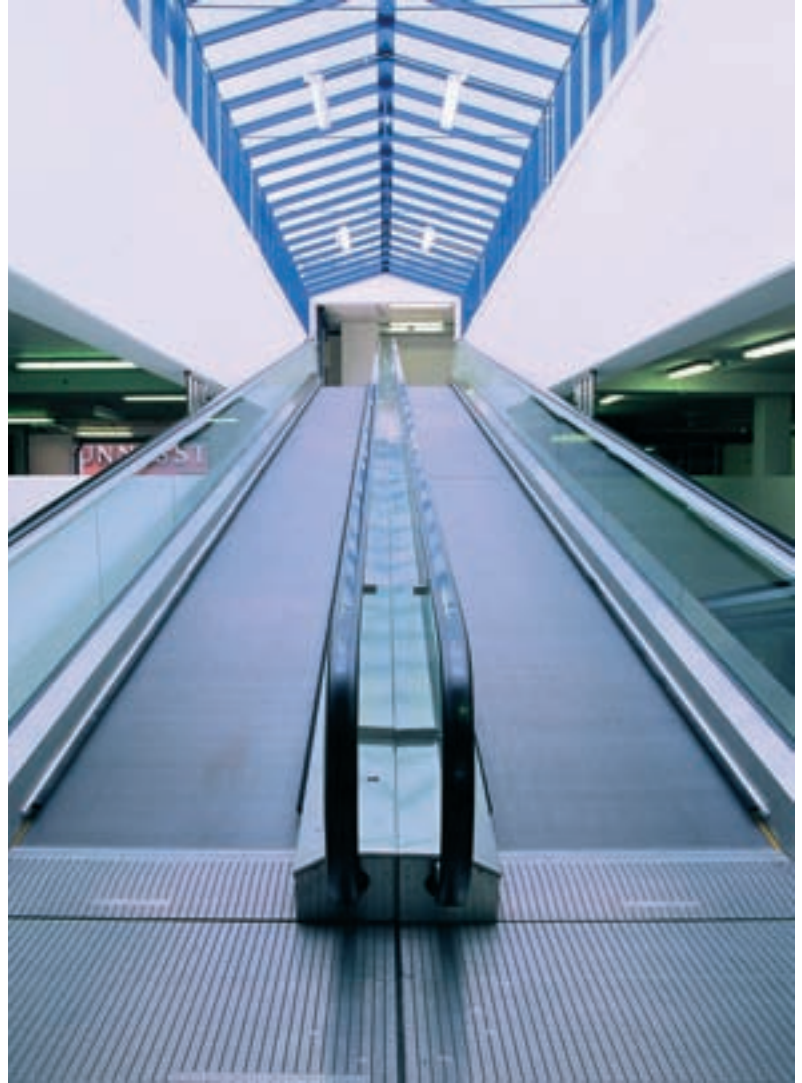
- Machine Room Hydraulic/Traction Systems
- Machine Room Less Hydraulic/Traction Systems
- MaisonLift
- Earthquake Resistant Lift
- Compact, Dumbwaiter

LIFT ASSEMBLIES

- **Cabins**
 - Passenger Cabins
 - Freight/Goods Cabins
 - Firefighting Cabins
 - Panoramic Cabins
- **Doors**
 - Automatic Doors with VVVF Operator
 - Folding Doors
 - Semi-automatic Landing Doors
 - Circular Doors
 - Modernization Doors
- **Electronics**
 - Controllers
 - Car & Landing Operating Panels
 - Pre-wiring
- **Hydraulic Elevation Systems**
 - Piston & Cylinder Assembly
 - Power Units
 - Car Frames
 - Guide Rails
 - Wire Ropes
 - Hydraulic Oil
- **Traction Elevation Systems**
 - Traction Machines
 - Car Slings
 - Counterweight Slings
 - Governors
 - Guide Rails
 - Wire Ropes

COMPLETE ELEVATION SYSTEMS

- **KleemannPark**
 - Parking and Car Lifting Systems
- **Freestair**
 - Chair or Platform Stair Lifting Systems
- **Escalators and Moving Walks**



Head Offices-Export Sales: Kilikis Industrial Area, P.O. Box 25, Post Code 61 100, Kilikis, Greece
Operator: +30 23410 38100, Fax: +30 23410 38200, **Email: headoffice@kleemann.gr**



Kilikis Industrial Area, P.O. Box 25, Post Code 61 100, Kilikis, Greece, Operator: +30 23410 75730, Fax: +30 23410 75733
Email: commercial@klefer.gr, www.klefer.gr



Yukari Dudullu, Türker, Cad No 34 34775, Ümraniye Istanbul TÜRKIYE, Tel: +90 216 4662267, Fax: +90 216 4662285
Email: info@kleemannturk.com



Golubinačka b.b, Šimanovci, Beograd, Serbia - Tel. +38122409000, Fax: +38122409090
E-Mail: office@kleemann.rs



str. Filderman Wilhelm nr. 4 bis, 3 district, Bucharest
Tel: 0314228917, 0770801200, 0770801238, Fax: 0314228916, **www.kleemannlifts.com**



Kilikis Industrial Area, Post Code 61 100, Kilikis, Greece
Tel: +30 23410 72270, Fax: +30 23410 72280
E-Mail: info@modacabina.com, www.modacabina.com